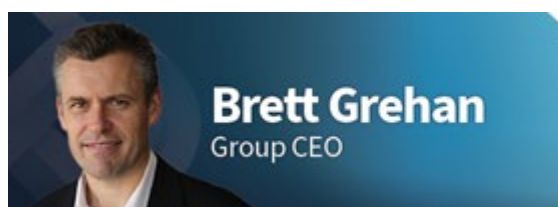




11 August 2022 - **Edition No.40**



Brett Grehan
Group CEO



This ChainMail Express is a special edition dedicated to the launch of our new Group-wide sustainability policy and supporting strategy under the Sustainable Moves banner.

Sustainable Moves outlines our Group's commitment to delivering a sustainable supply chain for our customers and communities. It acknowledges our responsibilities when it comes to proactively managing the economic, societal, and environmental impacts of our operations, and the need to both transparently measure ourselves against key performance indicators and hold ourselves to account.

Sustainability – and decarbonisation particularly – are critical issues shaping the world around us. There is clear evidence the planet is warming, and we need to act and act boldly to address the issues. Not only is it important for the environment we leave our children, it is also increasingly important to our customers.

As a business we have some significant emissions (more than 84,000 tonnes across the Group in the last 12 months), from our trucks, mobile equipment, light vehicles, and buildings. The challenge in our case is many of the technologies are still emerging or very expensive (e.g. long haul hydrogen power trucks), albeit improving quickly.



As mentioned earlier in the year, identifying opportunities to reduce our carbon emissions is one of the Fit for Business priorities. A team of wonderful colleagues across the Group has been hard at work progressing initiatives like the LINX Fuel Tool, Radar Street solar installation and others that will help set us up for success over the immediate and longer term.

I am super excited by the efforts they have made and even more excited to see we are starting to make some tangible changes.

This edition will give you a flavour of some of the work underway.

A big thank you to everyone involved in our sustainability efforts.

Brett



Further information and resources
available on Pipeline

Find out more

Scan the QR code for more information



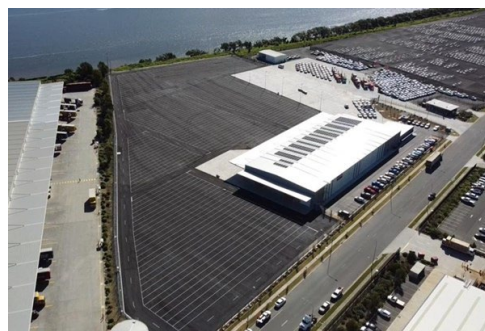


HOME SAFELY, EVERY DAY



BUSINESS IMPROVEMENT

Solar benefits on Autocare Services' Radar

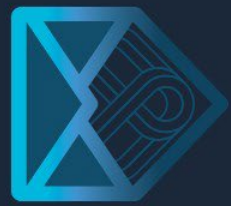


Autocare Services has officially opened its new Port of Brisbane base with the local team and customers set to reap the benefits of the state-of-the-art facility which will not only deliver improved levels of service, efficiencies, and safety outcomes but also significant sustainability credentials.

The new operation at Radar Street spans an impressive 40,000 square-metres with more than 3,000 square-metres of office and warehousing. The additional space means Autocare is able to store 1,100 vehicles, which when combined with adjoining sites, brings the total capacity to more than 5,000. The sizable set up also affords the team the space to better support its vehicle build and processing work.

What sets the new facility apart is the mammoth 99.9kW solar photovoltaic system which features 210 panels sitting across more than 600 square-metres of roof-space. At full capacity the system is capable of generating 450 kWh each day and despite significant energy requirements overnight, the system is still expected to halve the site's energy costs. Such a saving would also equate to 100 MT of carbon not making into the atmosphere each year.

In an effort to futureproof the site, Autocare also had the electrical infrastructure required for electric vehicle (EV) charging points installed in both the carpark and operations areas meaning it will be well placed to support visitors and staff, and customer requirements as EVs continue to grow in the Australian market.



For Autocare, the decision to make these strategic and forward-looking investments is largely based on the economics and future needs and demands of the sector, but equally driven by the LINX Cargo Care Group's Sustainability Moves strategy.

The strategy expands on the Group's vision to deliver sustainable supply chains for customers and communities and includes a commitment to reduce the carbon emission intensity of Group operations by 40 per cent by 2030. Additionally, the strategy makes clear the Group's intent to source 100 per cent of its electricity from renewable generation or renewable energy projects by 2030.



Fuel Tool to give LINX CCG the good oil on efficiencies and use

The new LINX CCG Fuel Tool is the latest innovation that will support the business from the road to the boardroom to track and study fuel use across the Group's on-road heavy vehicles.

Built in collaboration with specialist firm, Mov3ment, the new tool has now been rolled out across the Group and will be managed by the Group Asset team who will be tasked with updating the outcomes and data regularly.

The Fuel Tool captures, and reports data related to fuel efficiency measures over time with visibility down to the individual truck level.

Use cases:

- Identification of high and low efficiency operations/assets so these can be studied with learnings extrapolated across the Group
- The data will provide a baseline assessment from which to undertake specific driver skills initiatives to train-in high efficiency driving techniques
- Identification of high and low efficiency assets to aid decisions for procurement of new vehicles
- Reporting fuel and carbon emissions to customers (to meet a need we are increasingly seeing in our customer base)

The latest data from the Fuel Tool will be published monthly. To learn more and request access to the tool please contact the Group Asset Team.



Griffith launches Frontline Leaders Essentials Program



A cornerstone of our sustainability policy's people pillar – and our Group values – is our commitment to supporting and empowering our peoples' development.

A recent example of this commitment is the launch of the LINX Cargo Care Group Team Leaders Essentials Program. Kicking off last month in Griffith with the Regional Logistics team, the new program focuses on people leadership, teamwork, and leading a positive safety culture.

With guest speakers from across the Group, participants were taken through accountabilities, policies and procedures central to LINX leaders and provided tools and tangible skills to make a positive impact on their work environment and team culture.

Rollout of the new program will ramp up over the coming months with sessions across numerous East Coast Logistics, Regional Logistics, Port Services and C3 sites.



Going the extra mile for R U OK?



We've had a tremendous response from our people across the Group who have taken up the K's for R U OK? challenge – raising funds for the cause but also striving towards their own improved mental and physical health.

Special mentions to Sarah James and Frank Orieta who have both had significant success on the fund-raising side, Kevin Ford who, at the time of writing, leads the team with the most kilometres, and a sincere thanks to all those that participated.

Ask R U OK? No qualifications needed

The LINX CCG Foundation is now quickly turning its attention to R U OK? Day (8 September).

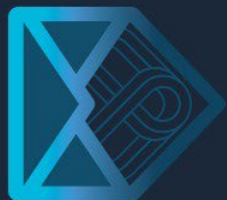
Similar to last year we will be encouraging teams to support the initiative in their own way, whenever and however works best for them from 5-16 September.

We already have a huge selection of materials and resources from R U OK? available for download from Pipeline.

We also have resources from our EAP provider Assure which outlines the support available year round to our people. A key part of this is Assure's Wellbeing Gateway app and we encourage you to download it today. More information and links can also be found on [Pipeline](#).

Scan the QR code for more information





Job board



Truck Driver - Interstate

Location: Brisbane

Closing date: 19 August 2022

In this permanent interstate role you will be responsible for operating HC vehicles to deliver new cars to dealerships.



Truck Driver - \$2,000 sign on bonus

Location: Portland

Closing date: 12 August 2022

The role will involve working Monday to Friday with occasional weekend work on a family friendly roster.

Plant Mechanic

Location: Portland

Closing date: 12 August 2022

We are looking for a plant mechanic in Portland where you will be responsible for the Provision of mechanical maintenance for all mobile equipment.



Truck Driver

Location: Mildura

Closing date: 12 August 2022

Do you want your weekends back? Work Monday to Friday as a Mildura based Shuttle Driver.

Supplementary Stevedore

Location: Brisbane

Closing date: 17 August 2022

We currently have a number of vacancies for casual Stevedores to join our operations at Brisbane.



[View more](#)



WE ARE ONE

Farewell to Trevor Grove



We recently farewelled Trevor Grove (pictured right) who has retired after 15 years of service at Albany Bulk Handling. We wish Trevor all the best as he embarks on a new adventure filled with travelling and lots of camping and thank him for his successful service to LINX and ABH.



CHAIN MAIL
EXPRESS



Connect with us

Do you have news to share?



Email

chainmail@linxcc.com.au



/linxcargocaregroup



@LINXCCG



/linx-cargo-care-group

