



# LINX – Project Logistics

## Who is LINX Cargo Care Group?

LINX Cargo Care Group brings together the capabilities of five market-leading operations built on more than 100 years of ports and logistics experience. Formed in 2016 following the separation from Patrick and the ASX-listed Asciano group of companies, LINX Cargo Care Group comprises LINX, Autocare Services, C3, Pedersen Group and GeelongPort. The Group features a formidable network of strategic assets which enables us to provide tailored supply chain solutions for our customers.

## Our Vision

***Delivering a connected supply chain, one move at a time***

All of our people across LINX Cargo Care Group play an important role in delivering a connected supply chain for our customers, communities and themselves. A connected supply chain is what our customers and industry desire, to seamlessly and efficiently deliver goods, and we will all achieve this together – one move at a time.

## Our Mission

***Safely working together to keep the supply chain moving for our customers and communities***

There is nothing more important than our people going home safely every day. Working together safely to deliver to our customers and communities is not negotiable.



LINX IS PART OF



# LINX’s difference – tailored end-to-end supply chains for regional projects

LINX’s logistical strength lies in our ability to offer tailored solutions in regional and import/export supply chains, supported by road and rail connectivity between Australia’s major ports and regional New South Wales. Our network of intermodal terminals, train services, road linehaul and last mile distribution, combined with our storage

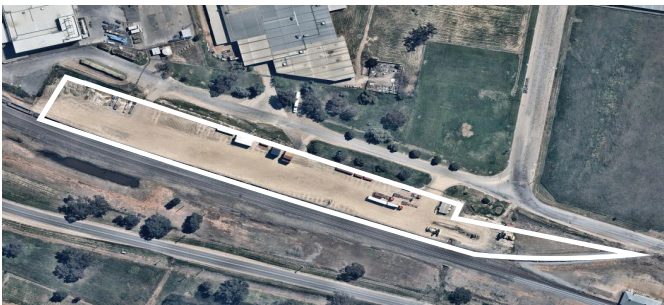
and container logistic services (tailgating, unpacking, repacking), enables us to provide seamless and end-to-end supply chains for projects that involve imports from Port of Melbourne, Port Botany and Port of Newcastle, and distribution by rail or road to intermodal terminals and to the project’s current works location.

## Griffith Rail Terminal



Property Details	
Overview	Rail terminal facilitating all Griffith region rail export/import services
Operating Hours	0700-1800 Monday to Friday Saturday train working only
Area	5.020 Hectares
Annual Container Throughput	17,000 TEU Empty Containers 17,00 TEU Full Containers 6 Reefer Points
Rail Sidings	Dual siding – 640 metres total Operating pad 370 metres

## Wagga Wagga Rail Terminal



Property Details	
Overview	Rail terminal facilitating Wagga Wagga region rail export/import services
Operating Hours	0700-1800 Monday to Friday Saturday train working only
Area	1.361 Hectares
Annual Container Throughput	11,000 TEU Empty Containers 11,00 TEU Full Containers 4 Reefer Points
Rail Sidings	Single siding – ARTC common user rail 320 metres

## Regional NSW Intermodal Supply Chains

LINX supports our customers by providing supply chain connectivity through regional New South Wales, South Australia and Victoria with services including:

- Key LINX-operated intermodal logistics hubs at Wagga Wagga, Griffith and Forbes in NSW.
- Rail services connecting the NSW Riverina to Port of Melbourne and NSW’s Central West to Port Botany. LINX’s dedicated Riverina rail service is recognised as the most consistent and reliable service travelling the south-east corridor from Griffith.

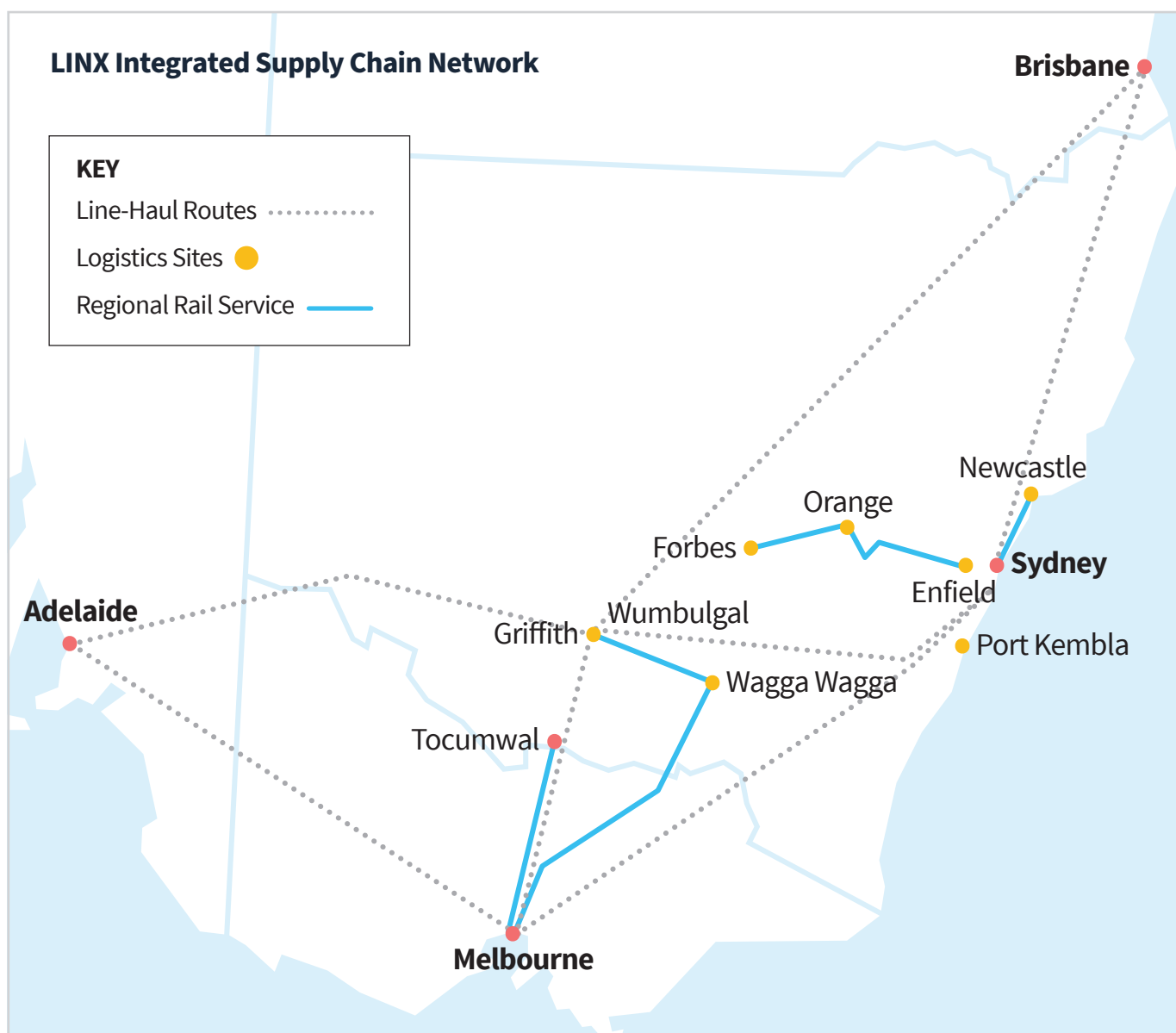
- LINX’s linehaul network and first and last mile distribution fleets based in Griffith, Wagga Wagga and Orange in NSW, connects our customers directly into the intermodal network or can provide a complete point-to-point road distribution service.
- Container packing/unpacking for bulk, palletised and bespoke freight, tailgating and distribution.
- Strong linkages with similar quality service providers enabling us to provide a one-stop-shop for our customers’ needs beyond our own network.

### LINX Intermodal Terminal – Enfield and port connectivity

The LINX Intermodal Terminal in Enfield in western Sydney is one of the largest import/export terminals in Sydney with the capacity to service 300,000 TEU annually. It offers exporters and importers in regional New South Wales and western Sydney seamless and efficient supply chain solutions by providing a dedicated freight line to Port Botany and direct access to the interstate mainline corridor, with an empty container park offering located on site.

### Newcastle, NSW operations

LINX is strategically located with multiple facilities at and close by the Port of Newcastle with on and off-wharf storage, two berths and a rail siding from which we provide a full range of supply chain solutions to import and export customers including stevedoring, transport and materials handling solutions, product management, storage and road distribution.



## Our projects

LINX has strong experience as the supply chain provider for a range of significant regional projects. We offer flexible solutions to match the logistics requirements and preferences of any project, including road and rail modes, and options to unpack containers at port, at staging locations, or at site, and to provide storage for containers and their unpacked contents.

### Griffith Solar Farm 3,000 TEU – 2020

Directly delivered to project from Port of Melbourne via LINX rail service to Griffith, NSW LINX road distribution with side loader to site and on-site unpack.

### Bomen Solar Farm 2,000 TEU – 2020

Delivered to Wagga Wagga, NSW by rail, unpacked and distributed by LINX road distribution to project site.

### Finley Solar Farm 1,500 TEU – 2019

Directly delivered to site via LINX rail service to Tocumwal, NSW and LINX road distribution.

## Our safety commitment

Our commitment to safety is manifest in best-in-class Health, Safety and Environment (HSE) management systems embedded throughout the Group, protecting the safety and wellbeing of our people and providing assurance of safe, compliant, and efficient operations. LINX Cargo Care Group operates an Integrated Management System to ensure a unified approach to managing risk across our diverse scope of operations, and to ensure that our leaders manage HSE risks and legislative obligations. LINX Cargo Care Group has embedded a range of innovative systems and tools to support our safety objectives, including the Lifeguard system to support incident reporting and investigation, and the Guardian in-cab monitoring system to assist behavioural awareness of fatigue and distraction while driving.



## Our customers

LINX is proud of our long-standing relationships with customers such as BlueScope Steel, Casella Wines, Orora, Coca-Cola Amatil and SunRice, for whom we provide a range of end-to-end supply chain services such as stevedoring, container packing and unpacking, storage and distribution by road and rail.

### Fully-managed end-to-end supply chain solution for Casella Wines

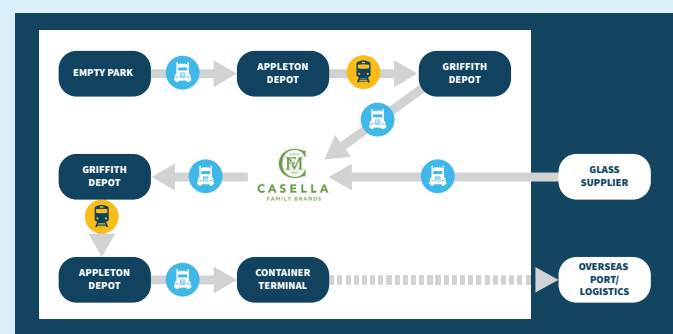
The challenge of ensuring a complex end-to-end supply chain involving the handling of a premium beverage brand and millions of bottles of wine across three states and four continents via a range of transport modes including road, rail and sea freight is managed and co-ordinated with military-like precision.

LINX has designed a fully-managed end-to-end supply chain solution that includes:

1. Transportation of empty glass bottles by road from Adelaide to Griffith
2. Warehousing the glass bottles in Griffith which are destined for Casella Wines bottling facility in Yenda
3. Transportation of empty 20' containers from Melbourne to Griffith by rail to be packed with wine
4. Transportation of wine in 20' containers from Griffith to Melbourne by rail for the international market
5. Handling the 20' containers at the Melbourne Rail terminal and providing road shuttle services to the Melbourne international container terminals
6. Also provide transportation of wine from Casella's in Tautliners to points all over Australia for the domestic market

This is an example of a fully integrated logistics solution that combines our road, rail, and port assets, our logistics and warehousing facilities in the Riverina, as well as our understanding of the complex supply chain issues that our customers often experience.

Ultimately the cost savings that LINX provides helps Casella's become more competitive in the wine market both here and abroad, which is perhaps one of the most competitive markets there is.








“For more than 15 years, LINX has been a significant contributor to the success of Casella Family Brands, both internationally and domestically. LINX plays an integral role throughout our supply chain. They are actively involved in delivering glass to our winery for packing, through to loading containers at the port for the export of bottled wine to bulk wine and delivering into our Australian retail partners.”

LINX's ability to understand our business, to grow rapidly with our business and to provide cost-effective, innovative supply chain solutions has enabled Casella Family Brands to grow exponentially in more than 50 markets around the world.”

**John Casella,**  
Casella Wines.

## Our people

LINX's greatest asset are our people; a team of highly skilled, qualified, and experienced road transport and rail operators, stevedores and skilled business leaders, ensuring a continuous and united focus on customer service and delivering valuable commercial outcomes.

Name	Title	Experience
<b>Allan Bramble</b> 	<b>LINX Cargo Care Group, Executive General Manager – Operations</b>	<p>Allan is responsible for the operations of LINX's logistics and intermodal rail businesses and C3 Australia.</p> <p>Allan commenced his career with the Department of Defence and has subsequently held executive appointments in the agriculture, manufacturing, supply chain and road transport sectors, in companies including GrainCorp, Gardner Smith and the K&amp;S Group. Allan holds a Masters of Commerce and accreditation with the Australian Institute of Company Directors (AICD).</p>
<b>Wayne Alpen</b> 	<b>LINX Regional General Manager</b>	<p>Wayne has 30 years' experience in logistics management across road, rail and warehousing. Originally employed in a family business acquired by Patrick in 2002, Wayne has worked across various LINX and Patrick businesses, delivering road and rail transport, metropolitan and regional intermodal terminal operations along with bulk and general storage facilities. As the LINX Regional General Manager, Wayne oversees three separate business units with a team of 150 employees over six operational sites, managing more than a million tonnes of freight each year by road and rail.</p>
<b>Sally Eagleton</b> 	<b>LINX East Coast General Manager</b>	<p>Sally leads LINX's logistics operations in Newcastle, Port Kembla and Brisbane. She has worked extensively across the construction, agriculture, mining, freight and logistics industries in her career of more than 25 years, including sales, marketing, and general management for OneSteel/InfraBuild Manufacturing with responsibility for the distribution of two million tonnes of steel long products per annum. Sally holds a Masters of Business and a Masters of Marketing.</p>
<b>Frank Andriano</b> 	<b>LINX East Coast Rail Manager</b>	<p>Frank's 26 years' of experience in logistics includes 15 years in the rail transport industry and 11 years in road transport. Frank's experience includes safety critical operations such as managing a national road transport terminal specialising in dangerous goods (explosives and radioactive products). Frank also had responsibility for the management of a major rail terminal servicing more than 60 interstate trains weekly, including over 10km of train sent to Perth, WA. Frank also has many years' experience with IMEX trains moving thousands of containers to and from Sydney ports.</p>
<b>Kersten Ross</b> 	<b>LINX General Manager, Commercial and Customer</b>	<p>Kersten is responsible for the design and execution of opportunities that add value to customer and stakeholder supply chain operations and business strategies. Kersten has more than 20 years' experience in distribution and transport operations, having led Shell's fuel logistics function for road and rail transport and in commercial customer relationships as Sales GM for Viva Energy's transport segment. Kersten holds a Bachelor of Science, a Masters of Business Administration, and Graduate of the Australian Institute of Company Directors accreditation.</p>

## Contact

Kersten Ross

General Manager, Commercial and Customer

LINX

@ K.Ross@LINXCCG.com.au

☎ 0416 165 256

